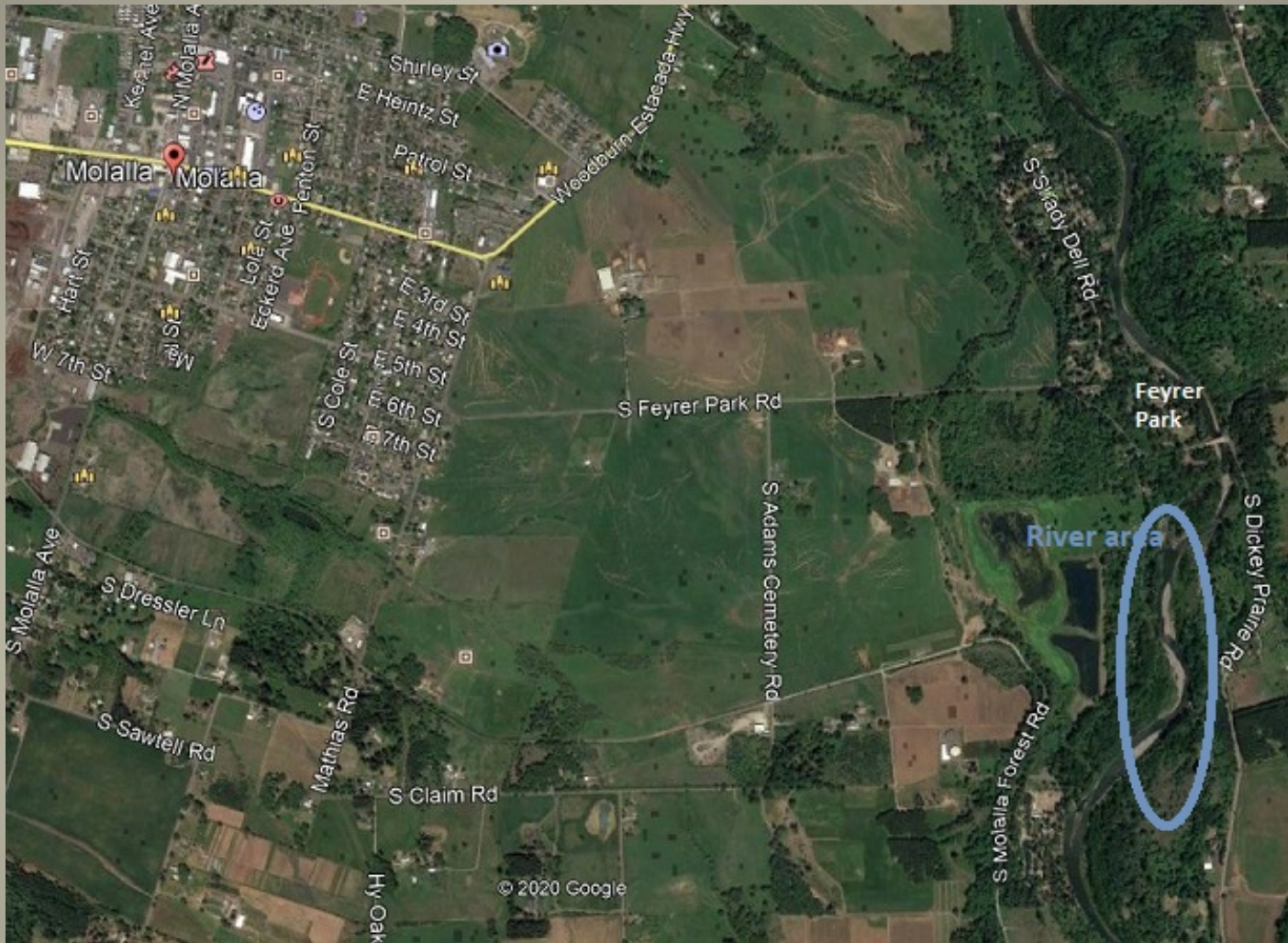


An aerial satellite map of the Molalla River area. The river flows from the top center towards the bottom. A side channel branches off to the right. A dashed blue line follows the course of this side channel. Labels include 'Feyrer Park Bridge' at the top, 'S. Blakely Prairie Rd' on the right, and 'S. Molalla Falls' on the left. The terrain is a mix of dense green forest and cleared agricultural fields.

Molalla River Side Channel

A project to stabilize and protect a productive side channel of the Molalla River is underway through a cooperative effort by the Native Fish Society, Molalla River Watch, Molalla River Alliance, Forests Forever, Port Blakely and private landowners.

Anyone wishing to help with this project may send a donation to the Native Fish Society, Molalla Side Channel, 813 7th St., Suite 200A, Oregon City, OR 97045



Aerial photo showing location of Molalla River Side Channel



Dotted line showing approximate course of side channel. River is flowing north, from bottom of photo to top.



Upstream from the side channel entrance.



Side channel entrance from upstream.



Entrance to the side channel showing gravel buildup.



Balancing Act

In consultation with a stream hydrologist, the side channel will be stabilized so cold water from the main stem of the river will continue to enter the channel during high-flow (winter) months, while warm water during low-flow summer months will be restricted to maintain cold water incubation habitat for Coho salmon.



View of side channel entry, first week of June, 2020.



Low Flow in Summer

Restricted water flow in side channel due to accumulation of gravel at entrance to main stem of river.



Shaded pools in the side channel are protected nurseries for Coho salmon and other anadromous fish.



In summer months, desirable cold water enters the side channel from Dickey Creek and from hyporehic flow rising through the bed of the side channel. The side channel is approximately a half mile long, re-entering the main stem of the river upstream from Feyrer Park.

Want to help?

This project is a cooperative effort by the Native Fish Society, Molalla River Watch, Molalla River Alliance, Forests Forever, Port Blakely and private landowners.

Anyone wishing to help may send a donation to the Native Fish Society, Molalla Side Channel, 813 7th St., Suite 200A, Oregon City, OR 97045